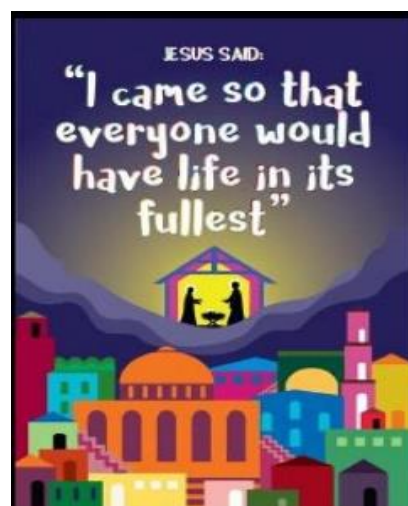




## St. Luke's CE Primary School

Where children *flourish*, are *happy* and *succeed*. Living their life to the full.

Believe and Achieve



Working together to be happy; to flourish; to succeed through our Christian Values of friendship, love, patience, forgiveness, trust and respect.

***“I have come that they may have life and have it to the full.”  
John 10:10***



### **Aim of policy:**

- To provide a consistent and shared understanding of how school addresses homework.
- To ensure that homework is engaging and focused upon providing high quality learning opportunities that have a positive impact upon pupil's progress.

### **Homework directly links to the aims of our teaching by seeking to:**

- enable children to become confident, resourceful, enquiring and independent learners;
- foster children's self-esteem;
- develop children's self-respect and encourage children to respect the ideas, attitudes, values and feelings of others;
- enable children to understand their community and help them feel valued as part of this community;
- help children grow into reliable, independent and positive citizens for the 21st century

### **Learning Logs:**

At St Luke's we provide each child with a learning log for their homework. Each piece of homework builds upon work done in class and is left open ended so that the children can interpret and direct their own learning.

Learning intentions for the homework are very open ended but include a minimum amount that must be done through differentiated intentions. These intentions are described through the 'must, should, could' structure. The 'must' intention is the minimum amount required whilst 'should' and 'could' are optional. This eliminates the usual debate about how much learning should be done at home as the children have an option to address some or all of the intentions. This differentiated system also ensures that it responds to individual circumstances.

Each piece of homework in the learning log should be represented visually which serves to engage the children and highlight the learning through creative presentation.

### **Abacus Pupil Learning World – Maths**

Some weeks your child will be set homework from Abacus pupil learning world. The Abacus pupil world is the place that your child will log into to play maths games, complete interactive activities and access rewards. They earn rewards by completing the games and activities that their teacher has allocated to them. They can also watch pupil videos, which recap key teaching topics. These videos are accompanied by pupil worksheets that help children practice key maths skills.

### **Logging into the pupil world**

The Abacus pupil world is powered by a website called ActiveLearn. To log into the pupil world, your child will need to:

1. Go to **[www.activelearnprimary.co.uk](http://www.activelearnprimary.co.uk)**
2. Enter their login details and click “Log in”.

Once your child has logged in, they’ll arrive at the Pupil Home. Children can personalise their home screen by choosing a world.

Just to remind parents that in order for the websites to be fully accessible, you need to make either 'Chrome' or 'Firefox' your default browser AND to allow 'pop-ups' on your computer. If any of you do not have access to a computer, please let school know so that we can give your child time, in school, to use our computers, laptops and/or iPads.

### **Monitoring of homework**

Stickers are added for each of the intentions (bronze for must, silver for should gold for could) as acknowledgement of the children’s efforts. Some teachers may wish to add comments on the work by using sticky notes which will not permanently affect the work.

### **Facilities beyond home**

Learning logs tie in with early morning work where children can access ICT and online resources to help them with their homework or can spend time on their learning logs. Materials are available to them at this time so that they can plan or complete homework.

The timescale for each piece of work is usually 1 week but this can vary depending upon the children’s learning needs.

### **Guidance on helping your child**

Guidelines for homework provided by the Department for Education show the minimum requirements for our learning logs:

Y1 & 2: 1 hour per week -reading, spelling. Homework is largely literacy and numeracy based

Y3 & 4: 1.5 hours a week literacy and numeracy based alongside other occasional assignments

Y5&6: 30 minutes per day following a regular schedule with emphasis on literacy and numeracy but also ranging widely over the curriculum.

### **Reading and Spellings**

Learning logs do not replace the need for regular, daily reading or spelling work which should be done through short sessions every day. Please record when you have listened to your child read in their reading record. Children in Reception will also be given key words to learn to read.

### **Parents can support their children's learning at home by:**

- Providing a peaceful, suitable place in which pupils can do their homework.
- Help younger pupils with their work and support older pupils to develop their independence.
- Make it clear to pupils that they value homework and support the school in explaining how it can help their learning.
- Encourage and praise pupils when they are trying hard with their homework.

**Reviewed April 2015**

**K Farrall**

**Headteacher**