



St Luke's CE Primary School

Where children flourish, are happy and succeed.
Living their life to the full.

"I came so that everyone would have life in its fullest." John 10:10

Queen's Park Road, Heywood, OL10 4XB
office@stlukesceprimary.co.uk

stlukesceprimary.blog-pages.co.uk

01706 369 443

School will close on Friday 20th October at 3.20pm for Half Term and re-open on Monday 30th October.
We hope you all enjoy a safe and restful break.



ESUS SAID:
"I came so that everyone would have life in its fullest"

We would like to give a warm welcome to our new pupils and families joining St Luke's CE Primary School. Our Reception children have settled in and have had a fantastic first term.

Our next open day for children starting in September 2024 is on Tuesday 21st November at 9.30am.



Where children flourish, are happy and succeed. Living their life to the full. Believe and Achieve



Trust
Friendship
Respect

Our Year 6 had a fantastic time at PGL

The children conquered their fears of height & enjoyed their activities: Abseiling, Orienteering, Giant Swing, Challenge Course, Zip Line, Trapeze, Archery, Sensory Trail & Balloon Splash.



Love
Forgiveness
Patience



yr 1 Willow



RESPECT
TEAMWORK
INCLUSION

Thank you to all our parents/carers for joining our Year 1 shared learning & lunch. The children loved sharing their lesson about seasons and created some fantastic artwork. Children wrote some wonderful sentences and sang songs about seasons.

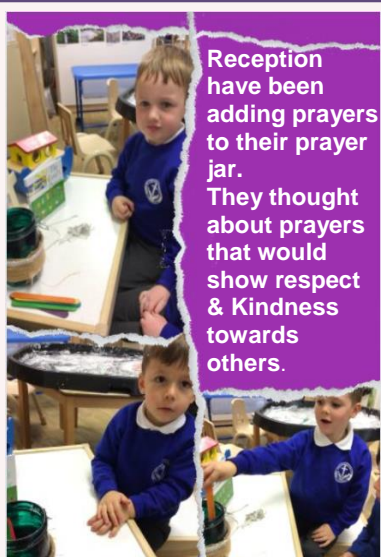


yr 1 Oak



In Collective Worship this half term we focused on our Christian Value "Respect"

Next half term we will focus on our Christian Value "Friendship"



Reception have been adding prayers to their prayer jar. They thought about prayers that would show respect & Kindness towards others.



Matthew 19:19 Respect your father and mother and love your neighbour as yourself.



Year 5 demonstrated how they can respect each other in school, home & community. They wrote some prayers about Respect



The children discussed our value for this half term "Respect" and created acrostic poems. They also had fun freeze framing summer activities as well as doing a bug, tree hunt & playing hide & seek.

“
LEARNING
ABOUT
RESPECT
IN
FOREST SCHOOL
”



Children linked forest school session to our Bible story of the term "Mary and Martha". They learned about respecting the environment & our animals.





St Luke's CE Primary School

Where children flourish, are happy and succeed.
Living their life to the full.

"I came so that everyone would have life in its fullest." John 10:10

Queen's Park Road, Heywood, OL10 4XB
office@stlukesceprimary.co.uk

stlukesceprimary.blog-pages.co.uk

01706 369 443



Winners of the Girls Football Team

Well Done To Our Girls & Boys Football Teams



Winners of the Boys Football Team



Our School Council decided they would like to do more to support our local community. We have now linked up with a local care home. Children have come up with ideas that they could do on their visits. Watch this space ...

#HelloYellow Day

World Mental Health Day

Thank you to all our parent/carers for your donations.

Total Raised = £265.47



Attendance for this Half Term

w/c 11/09/23

KS1

- 1st = Elm 98.2%
- 2nd = Ash 97.1%
- 3rd = Willow 94%

KS2

- 1st = Cedar 100%
- 2nd = Sycamore 99.3%
- 3rd = Birch 98.6%

w/c 18/09/23

KS1

- 1st = Oak 98.7%
- 2nd = Willow 98.3%
- 3rd = Elm 97.6%

KS2

- 1st = Birch 98.6%
- 2nd = Hawthorn 96.2%
- 3rd = Maple 96.2%

w/c 25/09/23

KS1

- 1st = Willow 98.9%
- 2nd = Snowdrop 95.5%
- 3rd = Ash 93.6%

KS2

- 1st = Cedar 100%
- 2nd = Birch 97.2%
- 3rd = Sycamore 96.7%

w/c 02/10/23

KS1

- 1st = Oak 99.3%
- 2nd = Snowdrop 95.3%
- 3rd = Ash 93.6%

KS2

- 1st = Juniper 97.2%
- 2nd = Sycamore 97.1%
- 3rd = Cedar 96.1%

w/c 09/10/23

KS1

- 1st = Ash 98.3%
- 2nd = Oak 98%
- 3rd = Willow 97.7%

KS2

- 1st = Birch 97.9%
- 2nd = Maple 97.3%
- 3rd = Juniper 97.2%

w/c 16/10/23

KS1

- 1st = Ash 98.3%
- 2nd = 96%
- 3rd = 95.7%

KS2

- 1st = Cedar 98.1%
- 2nd = Birch 96.9%
- 3rd = Rowan 95.7%



St Luke's CE Primary School

Where children flourish, are happy and succeed.
Living their life to the full.

"I came so that everyone would have life in its fullest." John 10:10

Queen's Park Road, Heywood, OL10 4XB
office@stlukesceprimary.co.uk

stlukesceprimary.blog-pages.co.uk

01706 369 443



Parking

We have received several complaints from our local residents regarding parking. Please be considerate when parking and do not block our local residents' driveways or entrances.

THANK YOU

School Grid (Dolce) – School Meals

Please check your Food & School Account on School Grid. All arrears must be cleared before the end of this half term.

NB: Dinner Money must be paid in advance on your School Grid Account.

School dinners are £2.46 per day, £12.30 per week.

If your account is in arrears of £5 or more, Dolce will not authorise your child's meal. Please check your child's account weekly. If possible, please order your child's meal at home.

If you have any problems, please ring Dolce customer service on 01942 707709 then choose option 1.

PE & FOREST SCHOOL FOR NEXT HALF TERM

Forest School: Please bring a change of footwear for Forest School otherwise they will not be able to take part.

PE: Children will need to come into school in full PE kit. No football kits, no branded tracksuits & no coloured t-shirts.

Reception – Bluebell & Snowdrop

Wednesday – Forest School

Friday – PE

Year 1 - Oak & Willow

Wednesday – PE

Thursday – PE

Year 2 – Ash & Elm

Tuesday – PE

Wednesday – PE

Year 3 – Birch

Forest School – Monday 30th

October, Monday 13th November,

Monday 11th December (full school

uniform on non forest school days)

Wednesday – PE

Year 3 – Cedar

Forest School – Monday 6

November, Monday 20th November,

Monday 4th December (full school

uniform on non forest school days)

Wednesday – PE

Year 4 – Hawthorn

Monday pm – Swimming (last day will

be 29th January 2024)

Tuesday – PE

Year 4 – Maple

Monday – PE

Tuesday – PE

Year 5 – Juniper

Monday – PE

Friday – PE

Year 6 – Sycamore

Forest School – Tuesday 31st

October, Tuesday 14th November,

Tuesday 28 November, Tuesday

12th December (full school uniform

on non forest school days)

PE – Friday

Year 6 – Rowan

Forest School – Tuesday 7th

November, Tuesday 21st November,

Tuesday 5th December (full school

uniform on non forest school days)

Friday - PE

PACKED LUNCHES

At St Luke's we are committed to provide an environment that promotes Healthy Eating.

All children who bring in packed lunches from home must contain a healthy balanced meal eg: Sandwiches, wraps, pasta, fruits, crisps, yogurt, vegetable sticks, cheese.

Packed Lunches must not contain:

any form of sweets, tubes of pringles, chocolate bars, packets of biscuits, fizzy drinks & energy drinks.

Please see link below for packed lunch ideas:

<https://www.nhs.uk/healthier-families/recipes/healthier-lunchboxes/>

Safety on School Grounds

The beginning and end of the school day is very busy, we are managing a high volume of traffic & people entering/exiting school grounds. To keep everyone safe we ask that:

- If you or your child arrive on a bike/scooter then walk when reaching the school path
- We do not allow dogs on school grounds
- Once children have been handed over at the end of the day please keep the children beside you as you exit school grounds.

THANK YOU



Reminder for all Year 6 Parents/Carers:

There is less than 2 weeks to go until the closing date, 31st October 2023, for secondary school applications for September 2024. Please visit [About applying for a secondary school place | Apply for a year 7 secondary school place | Rochdale Borough Council](#) and follow the links for applying for a secondary school place to register an account with their dedicated Admission Portal. National offer day is on Friday 1st March.



Thank you to all parents/carers for your support during parents' evening. It was great to see you all and share your child's work.



St Luke's CE Primary School

Where children flourish, are happy and succeed.
Living their life to the full.

"I came so that everyone would have life in its fullest." John 10:10

Queen's Park Road, Heywood, OL10 4XB
office@stlukesceprimary.co.uk

stlukesceprimary.blog-pages.co.uk

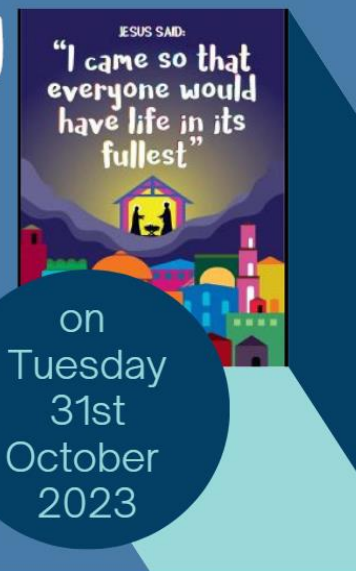
01706 369 443

Individual/Sibling Photos

The school photographer is coming on Tuesday 31st October. Children will be having individual photographs and can also have their photo taken with siblings in school.

Unfortunately, we are unable to have pre-school children joining us this time.

If your child normally has PE on a Tuesday please send them into school in FULL SCHOOL UNIFORM and send their trainers for their lesson.



Free School Meal Forms

We have been informed by Rochdale Council that they are no longer accepting paper applications for Benefit Related Free School Meals.

If you have filled a form from 1st July 2023 and you receive any of the following:

- Income Support
- income-based Jobseeker's Allowance
- income-related Employment and Support Allowance
- support under Part VI of the Immigration and Asylum Act 1999
- the guaranteed element of Pension Credit
- Child Tax Credit (provided you're not also entitled to Working Tax Credit and have an annual gross income of no more than £16,190)
- Working Tax Credit run-on - paid for 4 weeks after you stop qualifying for Working Tax Credit
- Universal Credit - if you apply on or after 1 April 2018 your household income must be less than £7,400 a year (after tax and not including any benefits you get)

Please can you re-apply using the link below:

<https://www.rochdale.gov.uk/xfp/form/306>

All children in Reception, Year 1 & 2 receive Universal Free School Meals but if you receive any of the above, you need to apply. If successful you could receive vouchers during the holidays.

PLEASE NOTE THAT YOU DO NOT NEED TO APPLY IF YOU ALREADY RECEIVE BENEFIT RELATED FREE SCHOOL MEALS.

School Gates

We have changed the time that we open the school gate at home time to 3.15pm as some classes still use the playground earlier.

The end of the school day will remain at 3.20pm.



NON-UNIFORM Day

We are having 3 non uniform days in exchange for assorted gifts, bottles and chocolate.

Friday 3rd November – please send child or adult tombola prizes into school for Christmas fair.

Friday 10th November – please send bottles into school for the Christmas fair.

Friday 17th November – please send chocolate into school for the Christmas fair.





St Luke's CE Primary School

Where children flourish, are happy and succeed.
Living their life to the full.

"I came so that everyone would have life in its fullest." John 10:10

Queen's Park Road, Heywood, OL10 4XB
office@stlukesceprimary.co.uk

stlukesceprimary.blog-pages.co.uk

01706 369 443

UP COMING PARENTAL ENGAGEMENT DATES 2023/2024

Tuesday 31st October – Individual School Photos – Children must come in school in full school uniform

Friday 3rd November – Non Uniform – exchange for children/adult gift

Wednesday 8th November – Yr 2 ASH Shared Learning & Shared Lunch 10.30am – 11.45am

Thursday 9th November – Yr 2 ELM Shared Learning & Shared Lunch 10.30am – 11.45am

Friday 10th November – Non Uniform – exchange for bottles

Tuesday 14th November – Reception BLUEBELL Phonics Workshop & Stay and Play 1.45pm – 3.10pm

Wednesday 15th November – Yr 6 SYCAMORE Shared Learning & Shared Lunch 10.30am – 11.45am

Wednesday 15th November – Reception SNOWDROP Phonics Workshop & Stay and Play 1.45pm -3.10pm

Thursday 16th November – Yr 6 ROWAN Shared Learning & Shared Lunch 10.30am – 11.45am

Friday 17th November – Non Uniform – exchange for Chocolate

Friday 17th November – Flu nasal/vaccination for children

Thursday 30th November – Christmas Fair from 3.30pm

Thursday 7th December – Christmas Jumper & Christmas Dinner Day

Thursday 7th December – Yr 3 & 4 Christingle & Christmas Carols at St Luke's Church at 9.45am

Friday 8th December – Yr 5 & 6 Christingle & Christmas Carols at St Luke's Church at 9.45am

Wednesday 13th December – Yr 3 & 4 Christingle & Christmas Carols at St Luke's Church at 9.45am

Wednesday 13th December – Yr 1 & 2 Nativity – Year 1 Parents to watch – 1.45pm

Thursday 14th December – Yr 1 & 2 Nativity – Year 2 Parents to watch – 1.45pm

Wednesday 20th December 2023 – Autumn Term Ends (Christmas Break) at 1.15pm & re-opens for Spring Term on Monday 8th January 2024