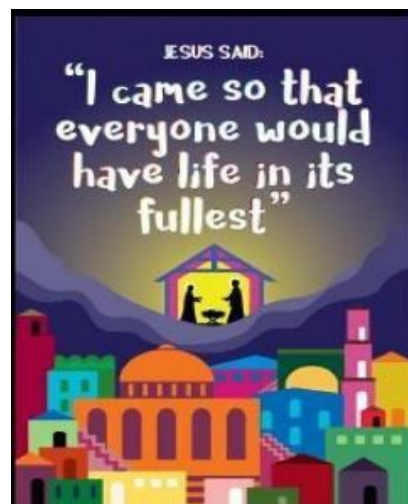




St. Luke's CE Primary School

Where children *flourish*, are *happy* and *succeed*. Living their life to the full.

Believe and Achieve



Working together to be happy; to flourish; to succeed through our Christian Values of friendship, love, patience, forgiveness, trust and respect.

***"I have come that they may have life and have it to the full."
John 10:10***



Attendance Policy

St Luke's Christian ethos underpins all aspects of its policy and practice

ST LUKES CE PRIMARY SCHOOL

Attendance Policy



Attendance policy

ST LUKE'S CE PRIMARY SCHOOL

Approved by:	Governing Board	Date: September 2023
--------------	-----------------	----------------------

Last reviewed on:	New policy
-------------------	------------

Next review due by:	September 2024
---------------------	----------------

Improving attendance is everyone's business

The barriers to accessing education are wide and complex, both within and beyond the school gates, and are often specific to individual pupils and families. The foundation of securing good attendance is that school is a calm, orderly, safe, and supportive environment where all pupils want to be and are keen and ready to learn.

Some pupils find it harder than others to attend school and therefore at all stages of improving attendance, schools and partners should work with pupils and parents to remove any barriers to attendance by building strong and trusting relationships and working together to put the right support in place. Securing good attendance cannot therefore be seen in isolation, and effective practices for improvement will involve close interaction with schools' efforts on curriculum, behaviour, bullying, special educational needs support, pastoral and mental health and wellbeing, and effective use of resources, including pupil premium. It cannot solely be the preserve of a single member of staff, or organisation, it must be a concerted effort across all teaching and non-teaching staff in school, the trust or governing body, the local authority, and other local partners.

All schools have a continuing responsibility to proactively manage and improve attendance across their school community. As set out in section 1 of the ['working together to improve school attendance'](#). Attendance is the essential foundation to positive outcomes for all pupils and should therefore be seen as everyone's responsibility in school.

Contents

1. Aims	2
2. Legislation and guidance	2
3. Roles and responsibilities	3
4. Recording attendance.....	5
5. Authorised and unauthorised absence	7
6. Strategies for promoting attendance	8
7. Attendance monitoring.....	8
8. Monitoring arrangements.....	9
9. Links with other policies.....	9
Appendix 1: attendance codes	9

1. Aims

We are committed to meeting our obligation with regards to school attendance through our whole-school culture and ethos that values good attendance, including:

- Develop and maintain a whole school culture that promotes the benefits of high attendance.
- Have a clear school attendance policy which all staff, pupils and parents understand.
- Accurately complete admission and attendance registers and have effective day to day processes in place to follow-up absence.
- Regularly monitor and analyse attendance and absence data to identify pupils or cohorts that require support with their attendance and put effective strategies in place.
- Build strong relationships with families, listen to and understand barriers to attendance and work with families to remove them.
- Share information and work collaboratively with other schools in the area, local authorities, and other partners when absence is at risk of becoming persistent or severe.

Each of these aims are set out in more detail in the working together to improve school attendance.

2. Legislation and guidance

This policy meets the requirements of the [working together to improve school attendance](#) from the Department for Education (DfE), and refers to the DfE's statutory guidance on [school attendance parental responsibility measures](#). These documents are drawn from the following legislation setting out the legal powers and duties that govern school attendance:

- Part 6 of [The Education Act 1996](#)
- Part 3 of [The Education Act 2002](#)
- Part 7 of [The Education and Inspections Act 2006](#)
- [The Education \(Pupil Registration\) \(England\) Regulations 2006 \(and 2010, 2011, 2013, 2016 amendments\)](#)
- [The Education \(Penalty Notices\) \(England\) \(Amendment\) Regulations 2013](#)

This policy also refers to the DfE's guidance on the school census, which explains the persistent absence threshold.

3. Roles and responsibilities

School attendance is everybody's business – however there are some staff that have additional duties and responsibilities.

3.1 The governing board

The governing board is responsible for:

- Promoting the importance of school attendance across the school's policies and ethos
- Are appropriately trained for their role
- Making sure school leaders fulfil expectations and statutory duties
- Regularly reviewing and challenging attendance data
- Monitoring attendance figures for the whole school
- Making sure staff receive adequate training on attendance
- Holding the Headteacher to account for the implementation of this policy

Our link governor for attendance is Fiona Fogarty.

3.2 The Headteacher

The Headteacher is responsible for:

- Implementation of this policy at the school
- Monitoring school-level absence data and reporting it to governors
- Supporting staff with monitoring the attendance of individual pupils
- Monitoring the impact of any implemented attendance strategies
- Issuing penalty notices referrals, where necessary

The designated Headteacher is Kim Farrall

3.3 The designated senior leader (SL) responsible for attendance (The SL staff member is the Attendance Link for the Local Authority)

The designated senior leader is responsible for:

- Supporting the Headteacher with their responsibility
- Leading attendance across the school
- Offering a clear vision for attendance improvement
- Evaluating and monitoring expectations and processes
- Having an oversight of data analysis
- Devising specific strategies to address areas of poor attendance identified through data
- Arranging calls and meetings with parents to discuss attendance issues
- Delivering targeted intervention and support to pupils and families
- Monitoring and analysing attendance data (see section 7)
- Benchmarking attendance data to identify areas of focus for improvement
- Working with Education Welfare Officers to monitor all our pupils
- Advising the Headteacher (authorised by the Headteacher) when to issue penalty notices warning letters

The designated senior leader responsible for attendance is **Ann Marie Shepherd** and can be contacted via email at amshepherd@stlukesceprimary.co.uk

3.4 The Attendance Officer

The school attendance officer is responsible for:

- Supporting the Headteacher with their responsibility
- Monitoring and analysing attendance data (see section 7)
- Benchmarking attendance data to identify areas of focus for improvement
- Take calls from parents about absence on a day-to-day basis and record it on the school system
- Transfer calls from parents to the Attendance Link in order to provide them with more detailed support on attendance when necessary
- Providing regular attendance reports to school staff and reporting concerns about attendance to the designated senior leader responsible for attendance and the Headteacher
- Working with Education Welfare Officers to monitor all our pupils
- Advising the Headteacher (authorised by the Headteacher) when to issue penalty notices warning letters

The attendance officer is **Angela Cain** and can be contacted via email on acain@stlukesceprimary.co.uk

3.5 Class Teachers

Class teachers are responsible for recording attendance on a daily basis, using the correct codes, and submitting this information to the school office. They need to submit these in the morning and the afternoon at the end of register (when the register closes).

3.6 School Admin staff

School admin is responsible for:

- Supporting the Attendance Link with their responsibility

3.7 All staff

Staff are expected to:

- Read the attendance policy and read the Dfe document 'working together to improve school attendance' – paying particular note of 'schools responsibilities'.

3.8 Parents/carers

There are new guidelines for parent/carers - [Guidance for parents on school attendance](#)

- Make sure their child attends every day on time
- Call the school to report their child's absence before 8:50am on the first day of the absence (and each subsequent day of absence), and advise when they are expected to return
- Provide the school with more than 1 emergency contact number for their child
- Ensure that, where possible, appointments for their child are made outside of the school day

4. Recording attendance

4.1 Attendance register

We will keep an attendance register, and place all pupils onto this register.

We will take our attendance register at the start of the first session of each school day and once during the second session. It will mark whether every pupil is:

- Present
- Attending an approved off-site educational activity
- Absent

- Unable to attend due to exceptional circumstances

Any amendment to the attendance register will include:

- The original entry
- The amended entry
- The reason for the amendment
- The date on which the amendment was made
- The name and position of the person who made the amendment

See appendix 1 for the DfE attendance codes.

We will also record:

- For pupils of compulsory school age whether the absence is authorised or not
- The nature of the activity if a pupil is attending an approved educational activity
- The nature of circumstances where a pupil is unable to attend due to exceptional circumstances

We will keep every entry on the attendance register for 3 years after the date on which the entry was made.

Pupils must arrive in school by 8:50am on each school day.

The morning register opens at 8:50am and closes at 9:10am.

The afternoon register opens at 1pm and closes at 1:20pm.

4.2 Unplanned absence

The pupil's parent/carer must notify the school of the reason for the absence on the first day of an unplanned absence by 8:50am or as soon as practically possible by calling the school admin staff (see also section 7).

Parent/carer's are able to notify the school by email: office@stlukesceprimary.co.uk or by telephone 01706 369443 where they can choose [option 1](#) to leave a voicemail or [option 2](#) to speak to the office.

We will mark absence due to illness as authorised unless the school has a genuine concern about the authenticity of the illness.

The school may ask the pupil's parent/carer to provide appropriate medical evidence. If you are asked to provide evidence this does not need to be a letter from your doctor or consultant, and doctors will not usually provide such letters. It can, instead, be appointment cards, prescriptions, or notes of previous consultations (including from the NHS App). We will not ask for medical evidence unnecessarily.

If the school is not satisfied about the authenticity of the illness, the absence will be recorded as unauthorised.

4.3 Planned absence

Attending a medical or dental appointment will be counted as authorised as long as the pupil's parent/carer notifies the school in advance of the appointment.

However, we encourage parents/carers to make medical and dental appointments out of school hours where possible. Where this is not possible, the pupil should be out of school for the minimum amount of time necessary.

The pupil's parent/carer must also apply for other types of term-time absence as far in advance as possible of the requested absence. Go to section 5 to find out which term-time absences the school can authorised.

4.4 Lateness and punctuality

A pupil who arrives late:

- Before the register has closed will be marked as late, using the appropriate code
- After the register has closed will be marked as absent, using the appropriate code

Our school inventory system logs all pupils arriving late, before and after the registers have closed, and will apply the appropriate code to the school registers. We are then able to report on this data and identify any patterns. If the number of lates become a concern then the parent/carer would receive a letter and, in some cases, be invited into school to discuss this further.

4.5 Following up unexplained absence

Where any pupil we expect to attend school does not attend, or stops attending without reason, the school will:

- Call the pupil's parent/carer on the morning of the first day of unexplained absence to ascertain the reason. If the school cannot reach any of the pupil's emergency contacts, then a message will be sent home via ParentMail to request they contact the school. We will then ring through the extended contact list if we do not hear back. If we are unable to make any contact, this may trigger a home visit.
- Identify whether the absence is approved or not, liaising with the Headteacher/ designated senior leader where necessary.
- Identify the correct attendance code to use and input it as soon as the reason for absence is ascertained – this will be no later than 5 working days after the session
- Call the parent/carer on each day that the absence continues without explanation to ensure proper safeguarding action is taken where necessary. If absence continues, the school will consider involving an education welfare officer

4.6 Reporting to parents/carers

The school will regularly inform parents about their child's attendance and absence levels; these will be shared in the termly pupil progress reports and at parent's evenings.

5. Authorised and unauthorised absence

5.1 Approval for term-time absence

The Headteacher will only grant a leave of absence to a pupil during term time if they consider there to be 'exceptional circumstances'. A leave of absence is granted at the Headteacher's discretion, including the length of time the pupil is authorised to be absent for.

There is no clear definition of 'exceptional circumstances but if something happens that is out of the ordinary, unavoidable or unexpected, then this will be considered.

The school considers each application for term-time absence individually, taking into account the specific facts, circumstances and relevant context behind the request.

Any request should be submitted as soon as it is anticipated and, where possible, before the absence, with the leave of absence request form, accessible via the school office or the school website. The Headteacher may require evidence to support any request for leave of absence.

Valid reasons for **authorised absence** include:

- Illness and medical/dental appointments (see sections 4.2 and 4.3 for more detail)
- Religious observance – where the day is exclusively set apart for religious observance by the religious body to which the pupil's parents belong. If necessary, the school will seek advice from the parents' religious body to confirm whether the day is set apart
- Traveller pupils travelling for occupational purposes – this covers Roma, English and Welsh gypsies, Irish and Scottish travellers, showmen (fairground people) and circus people, bargees (occupational boat dwellers) and new travellers. Absence may be authorised only when a traveller family is known to be travelling for occupational purposes and has agreed this with the school, but it is not known whether the pupil is attending educational provision
- Where the Headteacher has deemed an absence to be 'exceptional circumstances.'

Actions for unauthorised;

The school can refer to the local authority for a penalty notice fine parents for the unauthorised absence of their child from school, where the child is of compulsory school age.

If issued with a fine, or penalty notice, each parent must pay £60 within 21 days or £120 within 28 days. The payment must be made directly to the local authority.

6. Strategies for promoting attendance

- › Weekly update to parents of the class with the highest attendance shared via ParentMail
- › KS1 and KS2 attendance trophy's awarded each Monday in celebration assembly to the class with the highest attendance
- › Display in the hall displaying the class with the highest weekly attendance
- › Half-termly reward for the class with the highest attendance
- › Attendance figures reported to parents on the half-term newsletter

7. Attendance monitoring

7.1 Monitoring attendance

The school will:

- › Monitor attendance and absence data half-termly, termly and yearly across the school and at an individual pupil level
- › Identify whether or not there are particular groups of children whose absences may be a cause for concern

Pupil-level absence data will be collected each term and published at national and local authority level through the DfE's school absence national statistics releases. The underlying school-level absence data is published alongside the national statistics. The school will compare attendance data to the national average, and share this with the governing board.

7.2 Analysing attendance

The school will:

- › Analyse attendance and absence data regularly to identify pupils or cohorts that need additional support with their attendance, and use this analysis to provide targeted support to these pupils and their families
- › Look at historic and emerging patterns of attendance and absence, and then develop strategies to address these patterns

7.3 Using data to improve attendance

The school will:

- › Provide regular attendance reports to class teachers, and other school leaders, to facilitate discussions with pupils and families
- › Use data to monitor and evaluate the impact of any interventions put in place in order to modify them and inform future strategies

7.4 Reducing persistent and severe absence

Persistent absence is where a pupil misses 10% or more of school, and severe absence is where a pupil misses 50% or more of school.

The school will:

- › Use attendance data to find patterns and trends of persistent and severe absence
- › Hold regular meetings with the parents of pupils who the school (and/or local authority) considers to be vulnerable, or are persistently or severely absent, to discuss attendance and engagement at school
- › Provide access to wider support services to remove the barriers to attendance
- › Individual Attendance Support Plans for severely absent pupils are used as a way to engage and support families to ultimately improve their child/rens attendance.
- › Penalty notices can be issued for extended term time leave and/or poor school attendance; these are considered on a case by case basis.
- › If, following the steps above, school has seen no improvements then the parent/carer will be invited to an attendance panel, where an Educational Welfare Officer may be present.

- A referral to the Education Welfare Service would be considered once certain criteria has been met, where further legal proceedings could be arranged.

7.5 Working with the LA

We monitor the children's attendance on a regular basis. We analyse individual pupils, classes and year groups. We also look at different groups of children including – vulnerable, SEND, CfC, boys/girls, FSM etc. Persistent absentees, severely absent pupils, alternative provision, part-time timetables, lates and punctuality.

We have a duty to discuss all attendance with the Education Welfare Officer. Targeted Support/Confidential discussion meetings take place on a half termly basis with the Education Welfare Service.

The school work closely with the Education Welfare Service to monitor all pupils' attendance including;

- Vulnerable children
- Children who have a Social Worker
- EHCP or SEND
- Persistent absence (below 90%)
- Severely absent from school (below 50%)
- On an alternative provision
- On a part-time timetable
- Poor punctuality.
- Good attendance.

Our Education Welfare Officer (EWO) is **Yvonne O'Hara** (01706 925115)

8. Monitoring arrangements

This policy will be reviewed as guidance from the Local Authority or DfE is updated, and as a minimum annually by the Headteacher/Attendance Lead.

At every review, the policy will be approved by the full governing board.

9. Links with other policies

This policy links to the following policies:

- Child protection and safeguarding policy
- Behaviour policy

Appendix 1: attendance codes

The following codes are taken from the DfE's guidance on school attendance.

Code	Definition	Scenario
/	Present (am)	Pupil is present at morning registration
\	Present (pm)	Pupil is present at afternoon registration
L	Late arrival	Pupil arrives late before register has closed
B	Off-site educational activity	Pupil is at a supervised off-site educational activity approved by the school
D	Dual registered	Pupil is attending a session at another setting where they are also registered
J	Interview	Pupil has an interview with a prospective employer/educational establishment
P	Sporting activity	Pupil is participating in a supervised sporting activity approved by the school
V	Educational trip or visit	Pupil is on an educational visit/trip organised, or approved, by the school
W	Work experience	Pupil is on a work experience placement

Code	Definition	Scenario
Authorised absence		
C	Authorised leave of absence	Pupil has been granted a leave of absence due to exceptional circumstances
E	Excluded	Pupil has been excluded but no alternative provision has been made
H	Authorised holiday	Pupil has been allowed to go on holiday due to exceptional circumstances
I	Illness	School has been notified that a pupil will be absent due to illness
M	Medical/dental appointment	Pupil is at a medical or dental appointment

R	Religious observance	Pupil is taking part in a day of religious observance
S	Study leave	Year 11 pupil is on study leave during their public examinations
T	Gypsy, Roma and traveller absence	Pupil from a traveller community is travelling, as agreed with the school
Unauthorised absence		
G	Unauthorised holiday	Pupil is on a holiday that was not approved by the school
N	Reason not provided	Pupil is absent for an unknown reason (this code should be amended when the reason emerges, or replaced with code O if no reason for absence has been provided after a reasonable amount of time)
O	Unauthorised absence	School is not satisfied with reason for pupil's absence
U	Arrival after registration	Pupil arrived at school after the register closed

Code	Definition	Scenario
X	Not required to be in school	Pupil of non-compulsory school age is not required to attend
Y	Unable to attend due to exceptional circumstances	School site is closed, there is disruption to travel as a result of a local/national emergency, or pupil is in custody
Z	Pupil not on admission register	Register set up but pupil has not yet joined the school
#	Planned school closure	Whole or partial school closure due to half-term/bank holiday/INSET day