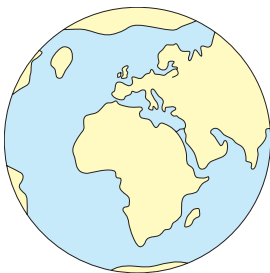


Knowledge organiser

Vocabulary	
atlas	book of maps
climate	what the weather is usually like, e.g. it is usually hot in summer, cold in winter
continent	large area of land, often with more than one country in it
degrees Celsius	measurement of temperature
globe	model of Earth
location	a specific place
temperature	how hot or cold something is
thermometer	something used to measure temperature
weather	what it is like outside today, e.g. is it raining or sunny?

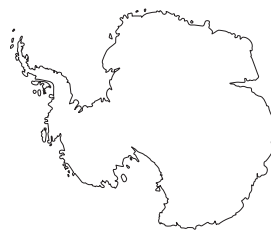
Continents



continents as they appear on a globe of the world



Africa



Antarctica



Asia



Europe



North America



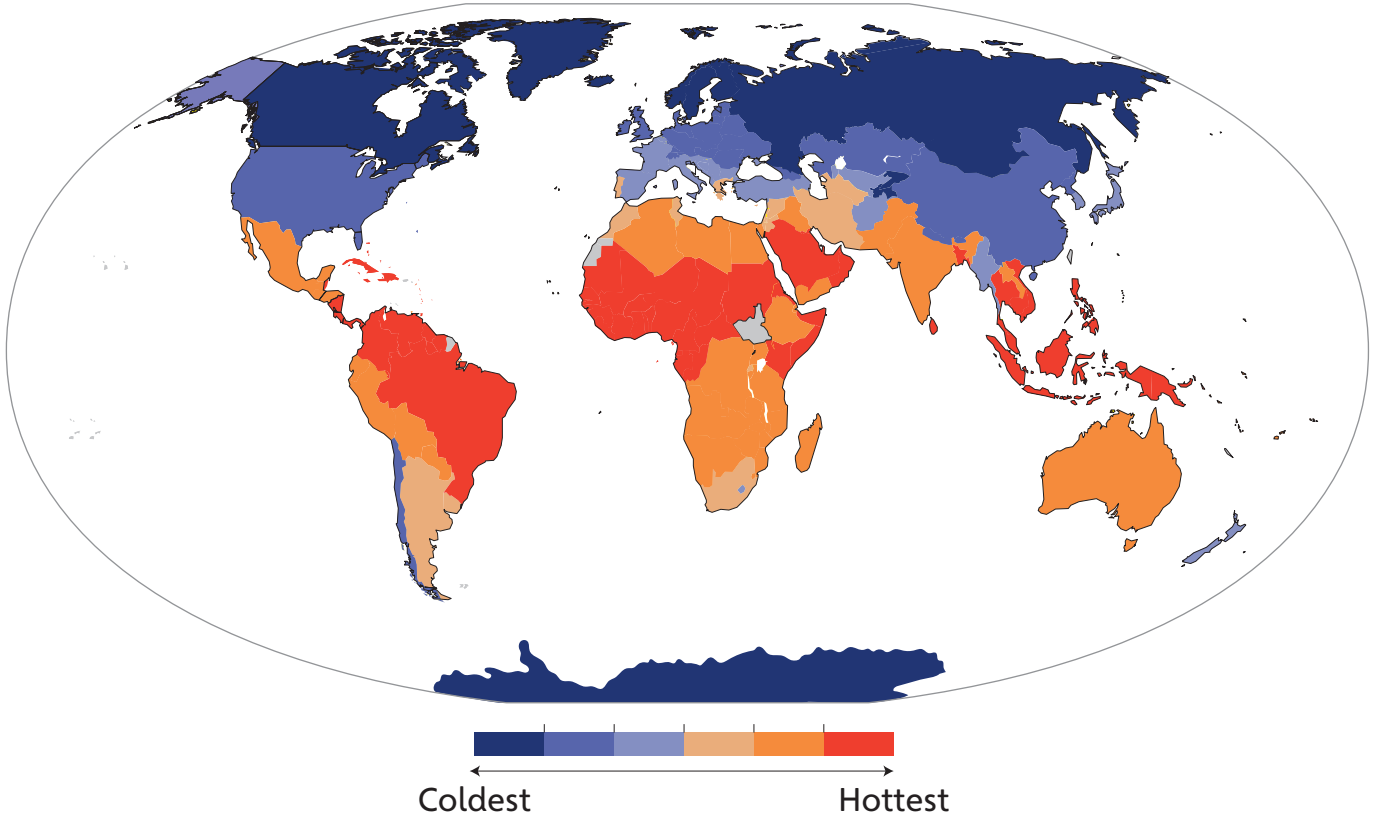
South America



Australasia

Knowledge organiser

Average temperatures around the world



Wonderful words

Jewish: Relating to the religion of Judaism.

Holy: Something that is considered to be good because it relates to religion

Christian: Anything that is part of, or someone who follows Christianity.

Place of Worship: A building where religious people gather to praise and worship God.

Muslim: A person who submits to the will of Allah by following the religion of Islam or something relating to the religion of Islam.

Community: A group of people who have something in common

Sacred: Something connected with God or dedicated to a religious purpose

Worship: To praise and follow God

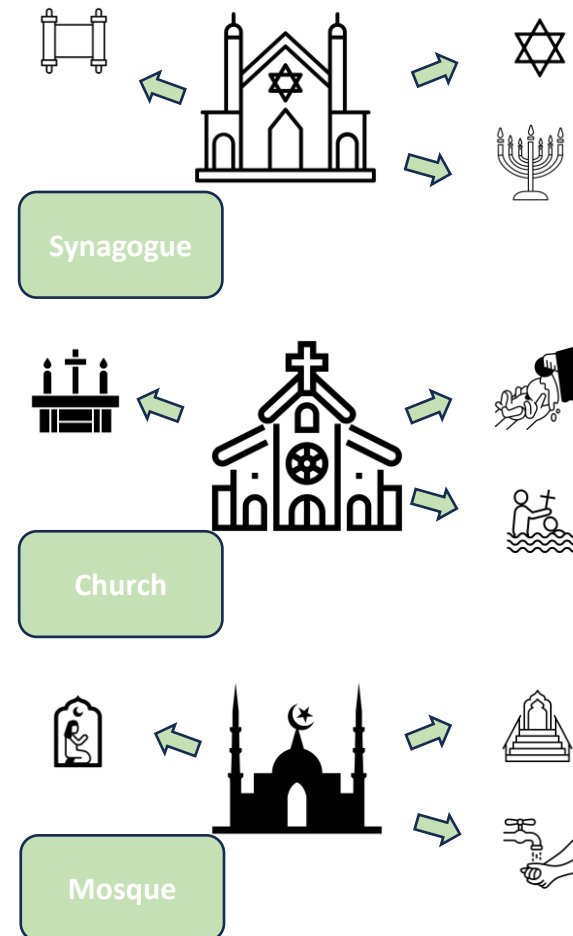
Church: The Christian place of worship

Mosque: The Muslim place a worship

Shabbat: A day of rest for Jewish people, the seventh day of the week

Synagogue: The Jewish place of worship, sometimes called a shul.

So how does it all work?



All icons are used free of charge from Noun Project. Individual artist credit is given on the following slide.

Important information

Places of worship are important to many religious people whichever religion they follow. The main purpose of a place of worship is to allow the **community** to come together and to **worship** together. This special purpose makes a place of worship a **sacred** space for religious people as it is dedicated to worshipping God.

A **church** is a **holy** building for **Christians** where they come together to worship God and also to celebrate key events in the lives of the people who worship there.

Jewish people will come together to worship God in a **synagogue** which means meeting place and is sometimes called a shul or school. Many Jewish people will gather together at the synagogue on **Shabbat** as this is the seventh day of the Jewish week and a day of rest.

The **mosque** is an important place of worship for the **Muslim** community, it allows them to come together for salah every day and for Friday Prayers so that Muslims can worship Allah as one.

Many places of worship also hold **community** events that also help people become part of their religious community. Many events related to special times in the life of a religious person are often held in a place of worship, these can include joining a religion, getting married or when a person dies.

Knowledge Organiser



Year 1 - Keeping Safe

Key questions

How Our Feelings Can Keep Us Safe

How many different feelings can people have?

Do different feelings make your body feel different?

What can you do if you have 'not so good' feelings?

How can you help if someone else has 'not so good' feelings?

Keeping Healthy

What do people need to keep healthy?

How do you keep yourself healthy?

Why do we need different things to be healthy?

Medicine Safety

How do medicines help?

Are medicines always helpful?

Where do medicines need to be kept? Why?

Key vocabulary

air sleep exercise stop
unsafe share nervous internet
medicine uncomfortable
body feelings food
water safe healthy
private worried scared

I can ...

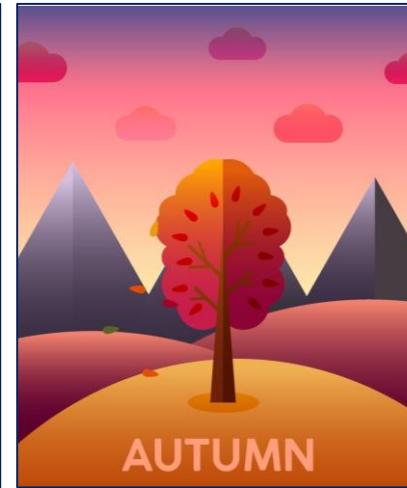
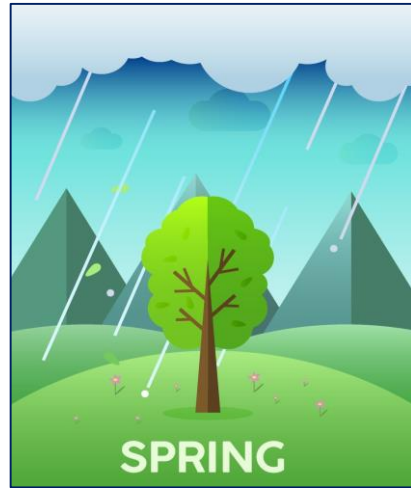
I can say what I can do if I have strong, but not so good feelings, to help me stay safe (e.g. sad - talk to someone).

I can give examples of how I keep myself healthy.

I can say when medicines might be harmful (e.g. overdose, if not needed, another person's medicine, etc.)

Seasons and The Weather : Year 1 : Spring 1

SEASONS



SPRING

March April May

- trees grow leaves
- weather becomes warmer
- days become longer
- baby animals born

SUMMER

June July August

- trees have full green leaves
- weather is usually warm
- days are bright and long



AUTUMN

September October November

- leaves become brown and fall
- weather becomes more rainy and cold
- days become shorter
- animals prepare to hibernate

WINTER

December January February

- no leaves on trees
- weather is cold and there can be snow
- days are dark and short
- animals hibernate

WEATHER



Rainy

Water falling from clouds.



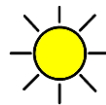
Cloudy

Some clouds in the sky.



Snowy

Snow falls from cold clouds.



Sunny

The sun is shining brightly in the sky.



Stormy

Thunder, lightning, wind and rain.



Foggy

Clouds we can see.

KEY TERMS

Hibernation

Animals sleep in the winter to survive the cold weather.

hedgehog snail tortoise



bat bee



Weather Forecast

Shows the weather today and in the future.

Cylinder	A tube shape
Detail	Extra decoration or items that add interest
Sculpture	Art in three dimensions; walk all around it to look at it
Three dimensional (3D)	A solid shape; art that isn't flat on paper

Artists

Samantha Stephenson

Louise Bourgeois

2D - flat, like a drawing

3D - can be held, like a cylinder

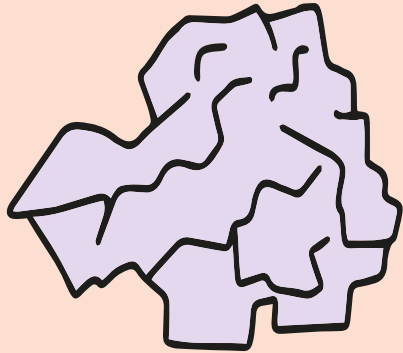
Cylinder

Tree of life

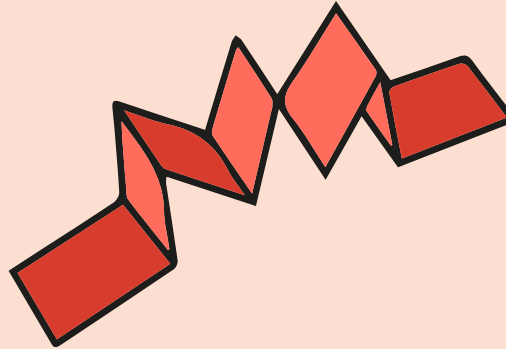
Many cultures have stories about a tree of life. The tree often represents all of nature.

Sidi Saiyyed Mosque

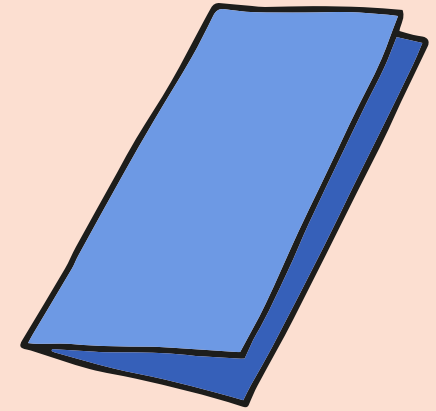
Scrunch



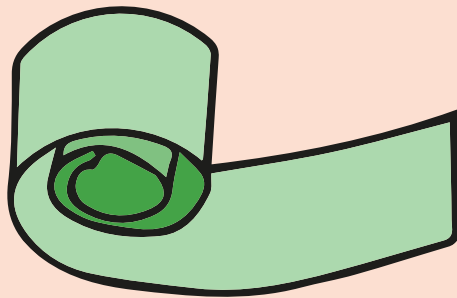
Zig-zag



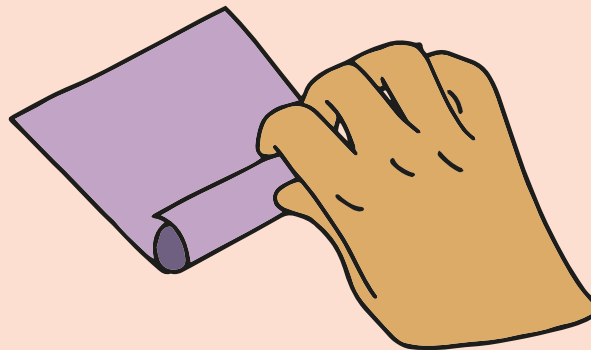
Fold



Spiral



Roll



Overlap

