



St Luke's CE Primary School

Where children flourish, are happy and succeed.
Living their life to the full.

"I came so that everyone would have life in its fullest." John 10:10

Queen's Park Road, Heywood, OL10 4XB
office@stlukesceprimary.co.uk

stlukesceprimary.blog-pages.co.uk

01706 369 443

School will close on Friday 16th February 2024 and re-open on Monday 26th February 2024.

Have a wonderful half term break.



**Reception
Phonics &
Stay &
Play**

Snowdrop
Tuesday 5th
March at
1.45pm to
3.10pm

Bluebells
Wednesday
6th March at
1.45pm to
3.10pm

**Looking
forward to
seeing you
all.**



Year 4 were inspired to invent a new chocolate bar and come up with a name for it, after reading Charlie and the Chocolate Factory. They did this with their parents/guardians.

They also enjoyed having their lunch with their parents/guardians.



Year 3 made oracle bones out of clay. They used the equipment to engrave Chinese writing into out bones/turtle shells and then wrote their dates of birth to practise Chinese writing.

They also enjoyed having their lunch with their parents/guardians.



Year 5 worked together with parents, thinking about the Christian Value of 'Love' to decorate a plant pot ready for Valentines Day. Each child planted a sweetpea seed inside the pot.

They also enjoyed having their lunch with their parents/guardians.





St Luke's CE Primary School

Where children flourish, are happy and succeed.
Living their life to the full.

"I came so that everyone would have life in its fullest." John 10:10

Queen's Park Road, Heywood, OL10 4XB
office@stlukesceprimary.co.uk

stlukesceprimary.blog-pages.co.uk

01706 369 443

In Collective Worship this half term we focused on
our Christian value **"Trust"**

Next half term we will focus on our Christian Value **"Forgiveness"**

Bible Story : Jesus Calms the Storm.

Isaiah 41:10 Fear not for I am with you;
be not dismayed, for I am your God. I
will strengthen you, Yes, I will help you.
I will uphold you with my righteous right
hand.



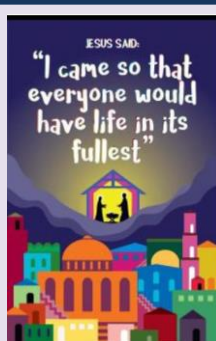
Learning For Life



Keeping
Myself
Safe



Proverbs 3:5-6
"Trust in the
Lord with all
your heart and
lean not on
your own
understanding;
in all your ways
submit to him,
and he will
make your
paths
straight." The
Good News:
Putting your
trust in God is
the way
forward.



Our Ethos Team at St Luke's



Our aim is to share our Christian Values
in our school. We help children to use
Christian Values in the everyday lives.



St Luke's CE Primary School

Where children flourish, are happy and succeed.
Living their life to the full.

"I came so that everyone would have life in its fullest." John 10:10

Queen's Park Road, Heywood, OL10 4XB
office@stlukesceprimary.co.uk

stlukesceprimary.blog-pages.co.uk

01706 369 443

**Well Done to our Dodgeball Team who came 1st in the Dodgeball Festival. We are so proud; they made decisions to benefit the team and made sacrifices where needed without fuss!
WELL DONE**



Link for short film:
<https://www.youtube.com/watch?v=uTHV2CclEns>

Last term some of our year 6 pupils were filmed for a project about violence against women & girls. Please click on link above. We are extremely proud of them.

REC WELL DONE



THE CHURCH OF ENGLAND

On the 18th January 2024 we had our SIAMS inspection.

We are pleased to say that we have received an extremely positive SIAMS inspection report which confirms that St Luke's CE Primary School is living up to its foundation as a Church School. A copy of the report has been sent out to you on ParentMail.



Our next SEND Coffee/Tea

Catch up Morning

Wednesday
13th March
9am-10am



SEND TEAM



MRS CROPPER



MRS GREENWOOD



MRS EDYVEAN

SEND Coffee/Tea, Cake & Catch-Up – Please join us!

An informal session on Wednesday 13 March 9am – 10am for parents of children with SEND to catch up with other parents, chat with our SEND team and discuss SEND support available.



St Luke's CE Primary School

Where children flourish, are happy and succeed.
Living their life to the full.

"I came so that everyone would have life in its fullest." John 10:10

Queen's Park Road, Heywood, OL10 4XB
office@stlukesceprimary.co.uk

stlukesceprimary.blog-pages.co.uk

01706 369 443

Free School Meals

If you receive:

- Income support.
- Income-based jobseeker's allowance.
- An income-related employment & support allowance.
- Support under part VI of the Immigration & Asylum Act 1999.
- Child Tax Credit - provided you aren't entitled to Working Tax Credit & have an income that doesn't exceed the current year's level.
- The guaranteed element of State Pension Credit.
- Working Tax Credit during the 4-week period immediately after your employment finished.
- Universal Credit: your child is only eligible for free school meals under Universal Credit if you & your partner have net earning of less than £7400 per year.

Use the link below to apply:

<https://www.rochdale.gov.uk/xfp/form/306>

All children in Reception, Year 1 & 2 receive Universal Free School Meals but if you receive any of the above, you need to apply. If successful you could receive Aldi/Iceland vouchers and HAF voucher during the Easter holidays.

PLEASE NOTE THAT YOU DO NOT NEED TO APPLY IF YOU ALREADY RECEIVE BENEFIT RELATED FREE SCHOOL MEALS.



School Grid (Dolce) – School Meals

Please check your Food & School Account on School Grid. All arrears **MUST BE** cleared as soon as possible.

NB: Dinner Money must be paid in advance on your School Grid Account.

School dinners are £2.46 per day, £12.30 per week.

NB: This will increase to £2.69 per day £13.45 per week from 1st April 2024

If your account is in arrears of £5 or more, your account will be frozen & Dolce will not authorise your child's meal. Please check your child's account weekly. If possible, please order your child's meal at home.

If you have any problems, please ring Dolce customer service on 01942 707709 then choose option 1.



Our next Parent's Evening will be on:

Tuesday 19th March (in school appointments)
3.30pm – 5.30pm

Thursday 21st March (online appointments)
3.30pm – 5.30pm

More details to follow.



ROCHDALE
BOROUGH COUNCIL

Year 6 – Secondary School Offer Day

Friday 1st March



Parking

We have received several complaints from our local residents regarding parking. Please be mindful when parking and do not block our local residents' driveways or entrances.

Thank You

MUSIC LESSONS

IF YOU SIGNED YOUR CHILD UP FOR MUSIC LESSONS FOR SPRING TERM, PLEASE CHECK YOUR PARENTMAIL FOR PAYMENT.

THE COST OF THESE LESSONS ARE £34.87
YOU CAN PAY IN FULL OR IN INSTALMENTS VIA PARENTMAIL.

IF NO PAYMENT IS MADE YOUR CHILD WILL NO LONGER BE ABLE TO CONTINUE WITH THEIR LESSON IN SUMMER TERM.

IF YOU NO LONGER WANT YOUR CHILD TO HAVE MUSIC LESSONS, PLEASE INFORM THE SCHOOL OFFICE AS SOON AS POSSIBLE.





Attendance for this Half Term

Lates - Children should arrive between **8.40am – 8.50am**

Arriving to school late means that children are not always best prepared for their day, they can miss important parts of the lesson, they often disrupt the rest of the class as time has to be taken away from other children to explain what they have missed.

If there is a specific medical or other problem that we need to know, please ring the school office.

We trust that you will make sure that your child is not late for school wherever possible.

w/c 08/01/2024

KS1

1st = Oak 97.3%
2nd = Bluebells 96.4%
3rd = Snowdrop 96.1%

KS2

1st = Hawthorn 98.7%
2nd = Cedar 96.1%
3rd = Sycamore 95.5%

w/c 15/01/2024

KS1

1st = Bluebells 98.7%
2nd = Oak 95.7%
3rd = Ash 95.7%

KS2

1st = Hawthorn 98.3%
2nd = Maple 97%
3rd = Birch 96.1%

w/c 22/01/2024

KS1

1st = Snowdrop 96.5%
2nd = Ash 95.5%
3rd = Willow 94.3%

KS2

1st = Sycamore 98.3%
2nd = Rowan 97.7%
3rd = Cedar 97.1%

w/c 29/01/2024

KS1

1st = Willow 97.7%
2nd = Snowdrop 96.5%
3rd = Bluebells 93.8%

KS2

1st = Birch 98.9%
2nd = Maple 98.3%
3rd = Rowan 96.3%

w/c 05/02/2024

KS1

1st = Willow 98.3%
2nd = Ash 97.6%
3rd = Oak 97.3%

KS2

1st = Sycamore 97.9%
2nd = Rowan 95.7%
3rd = Hawthorn 95.3%

w/c 12/02/2024

KS1

1st = Oak 96.7%
2nd = 95.9%
3rd = 95.2%

KS2

1st = Hawthorn 98%
2nd = Birch 96.8%
3rd = Sycamore 96.6%

PE & FOREST SCHOOL FOR NEXT HALF TERM

Forest School: Please bring a change of footwear for Forest School otherwise they will not be able to take part. Please come in full school uniform on Non-Forest School days.

PE: Children will need to come into school in full PE kit. No football kits, no branded tracksuits & no coloured t-shirts.

Bluebells

Wednesday – Forest School – 28th February, 13th March & 27th March
Friday – PE

Snowdrop

Wednesday – Forest School – 6th March & 20th March
Friday – PE

Yr 1 Willow

Tuesday - PE
Friday – Forest School – 1st March & 15th March

Yr 1 Oak

Tuesday - PE
Friday – Forest School – 8th March & 22nd March

Yr 2 Elm

Monday – Forest School – 26th February, 11th March & 25th March
Wednesday - PE

Yr 2 Ash

Monday – Forest School – 4th March & 18th March
Wednesday - PE

Yr 3 Birch

Tuesday - PE
Wednesday - PE

Yr 3 Cedar

Tuesday - PE
Wednesday - PE

Yr 4 Hawthorn

Monday - PE
Friday – PE

Yr 4 Maple

Monday – Swimming
Thursday – PE

Yr 5 Juniper

Monday - PE
Friday – PE

Yr 6 Sycamore

Thursday - PE
Friday – PE

Yr 6 Rowan

Thursday – PE
Friday - PE



St Luke's CE Primary School

Where children flourish, are happy and succeed.
Living their life to the full.

"I came so that everyone would have life in its fullest." John 10:10

Queen's Park Road, Heywood, OL10 4XB
office@stlukesceprimary.co.uk

stlukesceprimary.blog-pages.co.uk

01706 369 443

PRICE CHANGES TO BREAKFAST/AFTER SCHOOL CLUB & DOLCE SCHOOL MEALS FROM 1ST APRIL 2024



BREAKFAST & AFTER SCHOOL CLUB

Price Increase from 1st April 2024

BREAKFAST CLUB £3.20 PER SESSION, PER CHILD (OPENS AT 7.45AM)
AFTER SCHOOL CLUB £6.50 PER SESSION, PER CHILD (CLOSES AT 5.45PM)

LATE PICK UP CHARGE FROM AFTER SCHOOL CLUB £6 PER CHILD



Price Increase From 1st April 2024

New Price £2.69

Breakfast and After School Club

Breakfast Club and After School Club prices will increase from 1st April 2024. New prices will be:

- Breakfast Club = £3.20 per session/per child (opens at 7.45am)
- After School Club = £6.50 per session/per child (closes at 5.45pm)
- Late Pick Up Charge from After School Club = £6 per child

We have not increased prices over the last 2 years and try to keep the cost as low as possible to parents. However, with the National Living Wage increasing by 9.8% and food cost increasing we have had to change our prices.

Please note that bookings for after the Easter Holidays will be available from 30th March 2024.

Dolce School Meals

Dolce will be increasing their school meal price from 1st April 2024 to £2.69 per meal.



St Luke's CE Primary School

Where children flourish, are happy and succeed.
Living their life to the full.

"I came so that everyone would have life in its fullest." John 10:10

Queen's Park Road, Heywood, OL10 4XB
office@stlukesceprimary.co.uk

stlukesceprimary.blog-pages.co.uk

01706 369 443

UP COMING PARENTAL ENGAGEMENT DATES 2023/2024

Tuesday 5th March 2024 – Reception Snowdrops Phonics Workshop and Stay & Play 1.45pm – 3.10pm

Wednesday 6th March 2024 – Reception Bluebells Phonics Workshop and Stay & Play 1.45pm – 3.10pm

Wednesday 13th March 2024 – SEND Coffee/Tea Morning 9am – 10am

Tuesday 19th March 2024 – Parents Evening 3.30pm – 5.30pm (in school appointments) more details to follow

Thursday 21st March 2024 – Parents Evening 3.30pm – 5.30pm (online appointments) more details to follow

Monday 25th March – Year 6 SATs Meeting at 3.20pm

Tuesday 26th March – Year 4 Multiplication Meeting at 3.20pm

Wednesday 27th March – Year 2 SATs Meeting at 3.20pm

Wednesday 27th March – School Cinderella Panto for Parents 1.45pm – 3pm

Thursday 28th March – Year 1 Phonics Meeting at 3.20pm

**Thursday 28th March 2024 – Spring Term Ends (Easter Break) at 3.20pm.
Re-open for Summer Term Monday 15th April 2024 at 8.40am.**

Monday 6th May 2024 – May Bank Holiday

Monday 13th May to Thursday 16th May – KS2 SATs week