



# St Luke's CE Primary School

Where children flourish, are happy and succeed.  
Living their life to the full.

"I came so that everyone would have life in its fullest." John 10:10

Queen's Park Road, Heywood, OL10 4XB  
office@stlukesceprimary.co.uk

stlukesceprimary.blog-pages.co.uk

01706 369 443

**School will close on Thursday 28<sup>th</sup> March 2024 and re-open on Monday 15<sup>th</sup> April 2024.  
Have a wonderful Easter break.**

**BREAKFAST & AFTER SCHOOL CLUB**  
Price Increase from 1st April 2024

BREAKFAST CLUB £3.20 PER SESSION, PER CHILD (OPENS AT 7.45AM)  
AFTER SCHOOL CLUB £6.50 PER SESSION, PER CHILD (CLOSES AT 5.45PM)  
LATE PICK UP CHARGE FROM AFTER SCHOOL CLUB £6 PER CHILD

**Price Changes**  
FROM 1<sup>ST</sup> APRIL 2024

**Breakfast Club**  
\*\*\*

**After School Club**  
\*\*\*

**Dolce School Meals**

**dolce schools catering**

**Price Increase**  
From 1st April 2024  
**New Price £2.69**

**dolce schools catering**

## Breakfast and After School Club

Breakfast Club and After School Club prices will increase from 1<sup>st</sup> April 2024. New prices will be:

- Breakfast Club = £3.20 per session/per child (opens at 7.45am)
- After School Club = £6.50 per session/per child (closes at 5.45pm)
- Late Pick Up Charge from After School Club = £6 per child

We have not increased prices over the last 2 years and try to keep the cost as low as possible to parents. However, with the National Living Wage increasing by 9.8% and food cost increasing we have had to change our prices.

**Please note that bookings for after the Easter Holidays will be available from 30<sup>th</sup> March 2024.**

## Dolce School Meals

Dolce will be increasing their school meal price from 1<sup>st</sup> April 2024 to £2.69 per meal, £13.45 per week.

## School Grid (Dolce) – School Meals Arrears

Please check your Food & School Account on School Grid. All arrears **MUST BE** cleared as soon as possible.

**NB: Dinner Money needs be paid in advance on your School Grid Account.**

**School Dinners are £2.69 per day, £13.45 per week from 1<sup>st</sup> April 2024**

**If your account is in arrears of 3 meals, your account will be frozen & Dolce will not authorise your child's meal. Your child will need to bring a packed lunch. Please check your account weekly.**

**Please order your child's meal at home using this link: <https://app.schoolgrid.co.uk>**

If you have any problems, please ring Dolce customer service on 01942 707709 then choose option 1.



# St Luke's CE Primary School

Where children flourish, are happy and succeed.  
Living their life to the full.

"I came so that everyone would have life in its fullest." John 10:10

Queen's Park Road, Heywood, OL10 4XB  
office@stlukesceprimary.co.uk

stlukesceprimary.blog-pages.co.uk

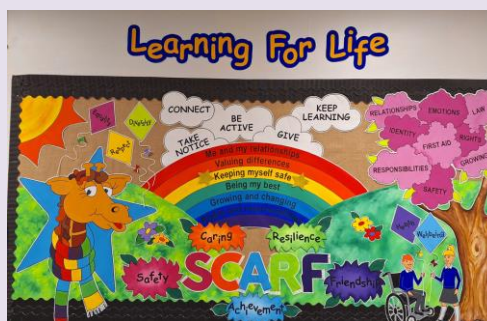
01706 369 443

In Collective Worship this half term we focused on our Christian Value "Forgiveness"

Next half term we will focus on our Christian Value "Love"

Bible Story : Joseph and his coat of many colours

Colossians 3:23-24 Whatever you do, work heartily, as for the Lord and not for men, knowing that from the Lord you will receive the inheritance as your reward.



Being My Best

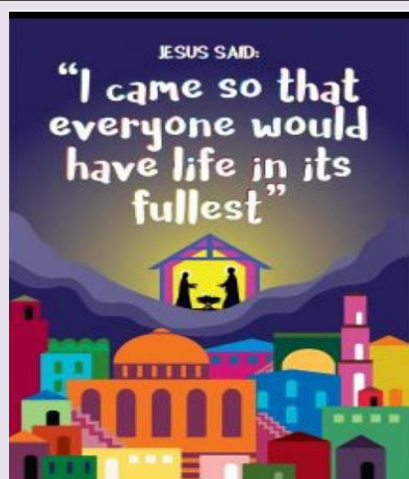


Rev Kirsty held a spirituality session with some of our children by making a plane that represents different areas of our lives (hence different colours). They then flew them to God to say sorry for the not so good things and he sent them back to allow us to try again.

#forgiveness



For if you forgive other people when they sin against you, your heavenly Father will also forgive you.  
"Matthew 6:14"







# St Luke's CE Primary School

Where children flourish, are happy and succeed.  
Living their life to the full.

"I came so that everyone would have life in its fullest." John 10:10

Queen's Park Road, Heywood, OL10 4XB  
office@stlukesceprimary.co.uk

stlukesceprimary.blog-pages.co.uk

01706 369 443



## World Book Day 2024 Careers Week at St Luke's CE Primary School

WE WOULD LIKE TO THANK EVERYONE WHO VISITED OUR SCHOOL IN PERSON OR ON TEAMS/ZOOM MEETINGS TO TALK TO OUR CHILDREN ABOUT THEIR CAREERS – POLICE, NURSE, BUILDER, ENTREPRENEUR, FIRE FIGHTERS, FASHION DESIGNER, CLINICAL THERAPIST & DISTRIBUTORS. YOU ALL CERTAINLY INSPIRED THEM.

**THANK YOU  
SO MUCH FOR  
YOUR TIME**

## Fund Raising at St Luke's CE Primary

**Thank You**  
to our St Luke's  
family & friends  
for your generosity.



BOOK FAIR - MONEY RAISED FOR SCHOOL LIBRARY £600

RED NOSE - COMIC RELIEF £250

FAIR TRADE CHOCOLATE £200 - DONATION TO MADE TO OSTOYA ROZROCZE ORPHANAGE IN SE POLAND

OUTSIDE CLASSROOM £519

**THANK YOU SO MUCH FOR YOUR DONATIONS**





# St Luke's CE Primary School

Where children flourish, are happy and succeed.  
Living their life to the full.

"I came so that everyone would have life in its fullest." John 10:10

Queen's Park Road, Heywood, OL10 4XB  
office@stlukesceprimary.co.uk

stlukesceprimary.blog-pages.co.uk

01706 369 443



## YR 5 & 6 BASKET BALL TEAM

WELL DONE TO OUR MIXED BASKETBALL TEAM WHO FINISHED 3RD.

Sports Events that children at St Luke's CE Primary School entered...



## YR 3 & 4 FOOTBALL TEAM

WELL DONE TO OUR FOOTBALL TEAM. THEY PLAYED SO WELL TOGETHER. TEAMWORK IS DREAM WORK!!!



## YR 4 BOYS FOOTBALL TEAM

OUR TEAM WENT TO THE CLIFF - MANCHESTER UNITED'S OLD TRAINING GROUND. THEY COMPETED AGAINST 7 OTHER SCHOOLS IN GREATER MANCHESTER AND CAME 2ND IN THE LEAGUE TABLE.

WE ARE SO PROUD OF YOU ALL. WELL DONE EVERYONE.



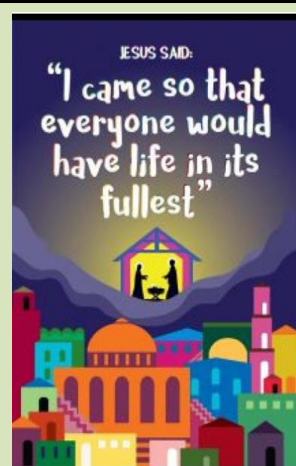
## YR 5 & 6 GIRLS FOOTBALL TEAM

FANTASTIC EFFORTS AT THE GIRLS FOOTBALL COMPETITION BY OUR YEAR 5 & 6 GIRLS. WE ARE SO PROUD OF THE DEDICATION YOU GAVE THROUGHOUT THE COMPETION.



## YR 2 FOOTBALL TEAM

THE BOYS DID SO WELL IN THE COMPETITION. THEY WORKED AS A TEAM AND SCORED GOALS WELL DONE BOYS FOR WORKING SO HARD.





# St Luke's CE Primary School

Where children flourish, are happy and succeed.  
Living their life to the full.

"I came so that everyone would have life in its fullest." John 10:10

Queen's Park Road, Heywood, OL10 4XB  
office@stlukesceprimary.co.uk

stlukesceprimary.blog-pages.co.uk

01706 369 443



**w/c 26/02/2024**  
**KS1**  
1<sup>st</sup> = Oak 99%  
2<sup>nd</sup> = Bluebells 97.9 %  
3<sup>rd</sup> = Willow 96.7%  
**KS2**  
1<sup>st</sup> = Hawthorn 99.3%  
2<sup>nd</sup> = Cedar 96.8%  
3<sup>rd</sup> = Rowan 96.7%

**w/c 04/03/2024**  
**KS1**  
1<sup>st</sup> = Elm 98.3 %  
2<sup>nd</sup> = Snowdrop 97.1 %  
3<sup>rd</sup> = Ash 96.6 %  
**KS2**  
1<sup>st</sup> = Hawthorn 99%  
2<sup>nd</sup> = Cedar 98.1 %  
3<sup>rd</sup> = Rowan 97.7%

**w/c 11/03/2024**  
**KS1**  
1<sup>st</sup> = Bluebells 95.7%  
2<sup>nd</sup> = Ash 94.1%  
3<sup>rd</sup> = Snowdrop 92.3%  
**KS2**  
1<sup>st</sup> = Maple 98.7 %  
2<sup>nd</sup> = Hawthorn 95.7%  
3<sup>rd</sup> = Birch 95.4 %

**w/c 18/03/2024**  
**KS1**  
1<sup>st</sup> = Ash 96.6%  
2<sup>nd</sup> = Oak 94.7%  
3<sup>rd</sup> = Snowdrop 94.5%  
**KS2**  
1<sup>st</sup> = Birch 98.2%  
2<sup>nd</sup> = Rowan 96.7%  
3<sup>rd</sup> = Maple 96.3%

**w/c 25/03/2024**  
**KS1**  
1<sup>st</sup> = Oak 98.8%  
2<sup>nd</sup> = Ash 97.8%  
3<sup>rd</sup> = Willow 96.3%  
**KS2**  
1<sup>st</sup> = Sycamore 99.1%  
2<sup>nd</sup> = Rowan 97.9%  
3<sup>rd</sup> = Maple 94.2%

## Children should arrive between 8.40am – 8.50am

Arriving to school late means that children are not always best prepared for their day, they can miss important parts of the lesson, they often disrupt the rest of the class as time is taken away from other children to explain what they have missed.

If there is a specific medical or other problem that we need to know, please ring the school office.

### **PE & FOREST SCHOOL FOR NEXT HALF TERM** :- Forest School: Please bring a change of footwear for Forest School otherwise they will not be able to take part. Please come in full school uniform on Non-Forest School days.

PE: Children will need to come into school in full PE kit. No football kits. no branded tracksuits & no coloured t-shirts

#### Bluebells

Wednesday – Forest School – 17<sup>th</sup> April, 1<sup>st</sup> May, 15<sup>th</sup> May  
Friday – PE

#### Snowdrop

Wednesday – Forest School – 24<sup>th</sup> April, 8<sup>th</sup> May, 22<sup>nd</sup> May  
Friday – PE

#### Yr 1 Willow

Thursday – PE  
Friday - Forest School – 19<sup>th</sup> April, 3<sup>rd</sup> May, 17<sup>th</sup> May

#### Yr 1 Oak

Thursday – PE  
Friday - Forest School – 26<sup>th</sup> April, 10<sup>th</sup> May, 24<sup>th</sup> May

#### Yr 2 Ash

Monday – PE  
Tuesday - PE

#### Yr 2 Elm

Monday – PE  
Tuesday - PE

#### Yr 3 Birch

Tuesday – Forest School – 16<sup>th</sup> April, 30<sup>th</sup> April, 14<sup>th</sup> May  
Wednesday – PE

#### Yr 3 Cedar

Tuesday – Forest School – 23<sup>rd</sup> April, 7<sup>th</sup> May, 21<sup>st</sup> May  
Wednesday – PE

#### Yr 4 Hawthorn

Monday – Forest School – 15<sup>th</sup> April, 29<sup>th</sup> April, 20<sup>th</sup> May  
Thursday - PE

#### Yr 4 Maple

Monday – Swimming  
Wednesday - PE

#### Yr 5 Juniper

Monday – Forest School – 22<sup>nd</sup> April, 13<sup>th</sup> May  
Wednesday - PE

#### Yr 6 Sycamore

Tuesday – PE  
Friday - PE

#### Yr 6 Rowan

Tuesday – PE  
Friday - PE





# St Luke's CE Primary School

Where children flourish, are happy and succeed.  
Living their life to the full.

"I came so that everyone would have life in its fullest." John 10:10

Queen's Park Road, Heywood, OL10 4XB  
office@stlukesceprimary.co.uk

stlukesceprimary.blog-pages.co.uk  
01706 369 443

Our next  
SEND Coffee/Tea



Catch up  
Morning

Wednesday  
22nd May  
9am-10am

## SEND TEAM



MRS  
CROPPER

MRS  
GREENWOOD

MRS  
EDYVEAN

## SEND Coffee/Tea, Cake & Catch-Up – Please join us!

An informal session on  
Wednesday 22nd May 9am – 10am  
for parents of children with  
SEND to catch up with other  
parents, chat with our SEND  
team and discuss SEND support  
available.

 **ROCHDALE**  
BOROUGH COUNCIL

Primary School Offer Day  
**Tuesday 16<sup>th</sup> April**

"I came so that  
everyone would  
have life in its  
fullest"  
St Luke's CE  
Primary School  
**MESSAGES**

## MUSIC LESSONS

IF YOU SIGNED YOUR CHILD UP FOR **MUSIC LESSONS FOR SPRING TERM**, PLEASE CHECK YOUR PARENTMAIL FOR PAYMENT.

**THE COST OF THESE LESSONS ARE**  
**£34.87**

YOU CAN PAY IN FULL OR IN INSTALMENTS VIA PARENTMAIL.

**IF FULL PAYMENT IS NOT MADE, YOUR CHILD WILL NO LONGER BE ABLE TO CONTINUE WITH THEIR LESSON IN SUMMER TERM.**

NB: MUSIC LESSON WILL BE **£3.42** PER LESSON FROM 1ST APRIL 2024.

IF YOU NO LONGER WANT YOUR CHILD TO HAVE MUSIC LESSONS, PLEASE INFORM THE SCHOOL OFFICE AS SOON AS POSSIBLE.



Did you know that the 'Free school meals' scheme offers much more than just school meals? Even if your child is in KS1 and already receiving free school meals, you could be entitled to much more, and could support St Luke's in providing your child/children with the best education!

• SCHOOL RECEIVES £1480 IF YOUR APPLICATION IS SUCCESSFUL. THIS HELPS US TO BUY RESOURCES FOR SCHOOL & ALLOWING US TO PROVIDE THE BEST EDUCATION FOR OUR CHILDREN.

• **FREE SCHOOL MEALS**

• FREE ACCESS TO A RANGE OF FUN & RANGE OF ACTIVITY CLUBS

• **FREE SUPERMARKET VOUCHER EVERY HALF TERM**

• IF YOU SUCCESSFULLY COMPLETE YOUR APPLICATION BEFORE **FRIDAY 19TH APRIL**, YOU WILL RECEIVE A £20 SUPERMARKET VOUCHER FROM ST LUKE'S CE PRIMARY, AS AN ADDITIONAL THANK YOU FOR SUPPORTING OUR SCHOOL. (SUCCESSFUL APPLICANTS WILL RECEIVE THEIR VOUCHERS ONCE SCHOOL HAVE RECEIVED CONFIRMATION)



**CHECK IF YOU ARE ELIGIBLE NOW BY COMPLETING THE ONLINE FORM:**

[HTTPS://WWW.ROCHDALE.GOV.UK/XFP/FORM/306](https://www.rochdale.gov.uk/xfp/form/306)

YOU WILL SIMPLY NEED YOUR COUNCIL TAX NUMBER AND DETAILS OF ANY BENEFITS YOU RECEIVE.

IF YOU WOULD LIKE ANY SUPPORT, PLEASE CALL OR POP IN TO THE SCHOOL OFFICE.



**Iceland**



Thank you to all parents/carers for your support during parents' evening. It was great to see you all and share your child's work.



# St Luke's CE Primary School

Where children flourish, are happy and succeed.  
Living their life to the full.

"I came so that everyone would have life in its fullest." John 10:10

Queen's Park Road, Heywood, OL10 4XB  
office@stlukesceprimary.co.uk

stlukesceprimary.blog-pages.co.uk

01706 369 443



The following trips have been booked. More details will follow after the Easter Holidays.

- Reception - Cockfields Farm
- Year 1 - Smithills Farm
- Year 2 - Imagine That
- Year 3 - Manchester Museum
- Year 4 - Eureka
- Year 5 - Reel Cinema & Puttstars



## UP COMING PARENTAL ENGAGEMENT DATES 2023/2024

**Monday 6<sup>th</sup> May 2024 – May Bank Holiday – School Closed**

**Monday 13<sup>th</sup> May to Thursday 16<sup>th</sup> May – KS2 SATs week**

**Wednesday 22<sup>nd</sup> May 2024 – SEND coffee morning 9am – 10am**

**School finishes on Friday 24<sup>th</sup> May at 3.20pm for Summer Half Term.  
Re-open on Tuesday 4<sup>th</sup> June at 8.50pm. Gates open at 8.40am.**

**End of June – KS1 SATs (Dates to be confirmed nearer to time)**

**W/C Monday 3<sup>rd</sup> June – Friday 14<sup>th</sup> June 2024 – Year 4 Multiplication Check Test**

**W/C Monday 10<sup>th</sup> June 2024 – Year 1 Phonics Screening Check**

**Tuesday 11<sup>th</sup> June 2024 – Reception Snowdrops Stay and Play & Shared Lunch 10.30am – 11.45am**

**Wednesday 12<sup>th</sup> June 2024 – Reception Bluebells Stay and Play & Shared Lunch 10.30am – 11.45am**

**Thursday 20<sup>th</sup> June 2024 – Summer Fair at 3.30pm**

**Friday 21<sup>st</sup> June 2024 – Class Photos**

**Wednesday 26<sup>th</sup> June 2024 – Sports Day – Years 1 & 2 at 9.30am – 11.30am**

**Wednesday 26<sup>th</sup> June 2024 – Sports Day – Reception Bluebells & Snowdrops at 1.30pm – 3pm**

**Thursday 27<sup>th</sup> June 2024 – Sports Day – Years 3 & 4 at 9.30am – 11.30am**

**Thursday 27<sup>th</sup> June 2024 – Sports Day – Years 5 & 6 at 1.30pm – 3pm**