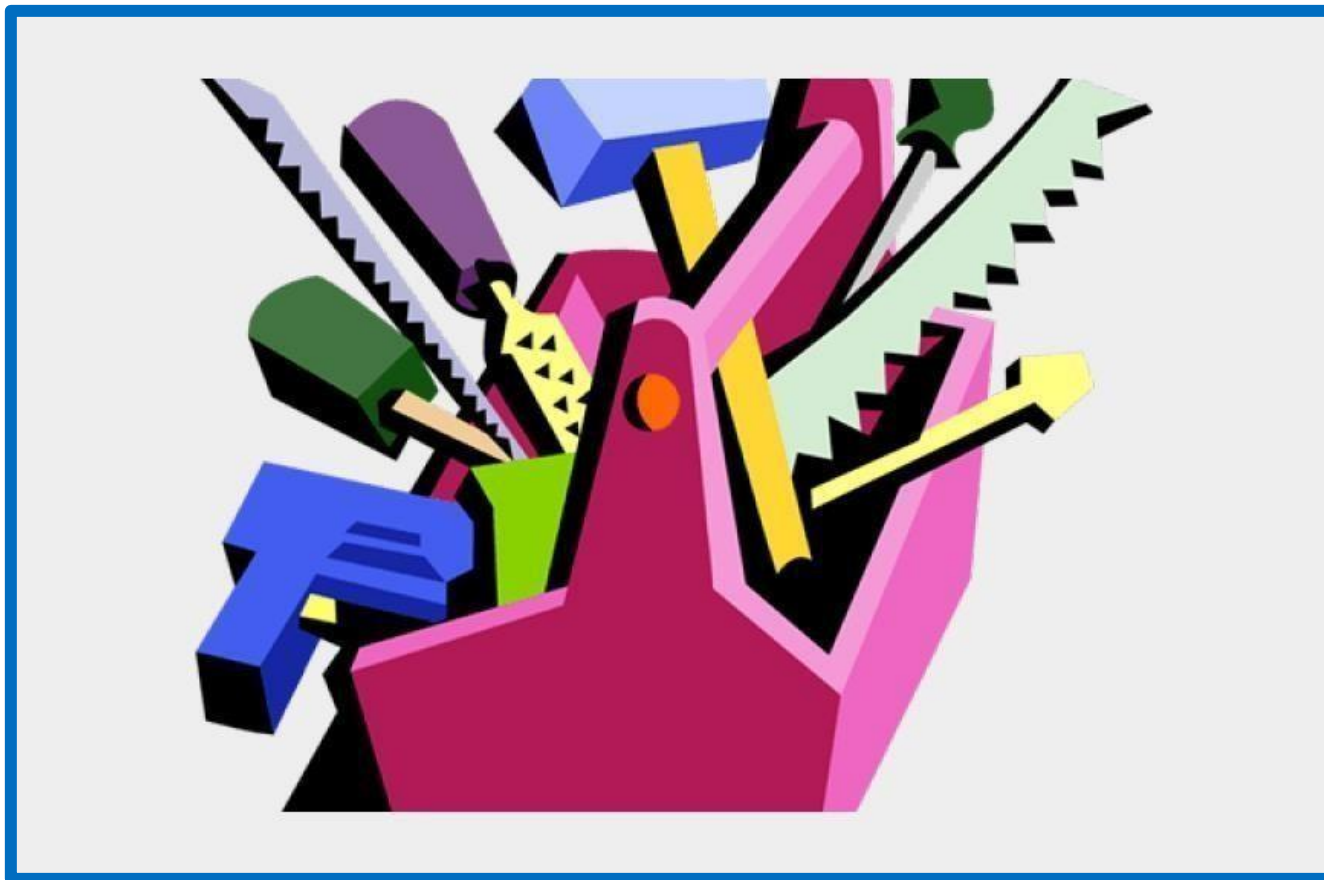




St Luke's CE Primary

## Design and Technology Annual Curriculum Map



# Design and Technology Annual Curriculum Map

	Design and Technology Curriculum Map						
Term	EYFS	Year 1	Year 2	Year 3	Year 4	Year 5	Year 6
Autumn 1	<b>ELG - Creating with materials: Colour mixing</b>  <b>Seasonal projects - forest school sessions.</b>			<b>Food- Eating seasonally</b>			
Autumn 2	<b>Food - Gingerbread, porridge</b>  <b>Seasonal projects - forest school sessions.</b>	<b>Structures- Constructing a windmill</b>	<b>Food- A balanced diet</b>		<b>Structures- Pavilions</b>	<b>Electrical system – Doodlers</b>	<b>Food- Come dine with me</b>
Spring 1	<b>ELG – Safely explore different techniques for joining materials.</b>  <b>Seasonal projects - forest school sessions.</b>			<b>Textiles- Cushions</b>			
Spring 2	<b>Cooking- Easter nests</b>  <b>Seasonal projects - forest school sessions.</b>	<b>Fruit and Vegetables</b>	<b>Structures- Baby Bear's chair.</b>		<b>Food- Adapting a recipe</b>	<b>Textiles- Stuffed toys</b>	<b>Structure- Playgrounds</b>
Summer 1	<b>Structures – Making props and costumes for different role play scenarios.</b>  <b>Seasonal projects - forest school sessions.</b>			<b>Digital world- wearable technology</b>			
Summer 2	<b>Cooking- fruit salad</b>  <b>Seasonal projects - forest school sessions.</b>	<b>Mechanisms- Wheels and Axles</b>	<b>Mechanisms: Making a moving monster</b>		<b>Mechanical systems- Making a sling shot car</b>	<b>Food- What could be healthier?</b>	<b>Electrical systems- steady hand game</b>